

Hello!
Bonjour!
Konitchuwa!
Hola!



Welcome to
Year 1

September 2024



Who are we?



Darwin Class
Mrs Boulton
Mrs Downing
Mrs Pylypenko



Goodall Class

Miss Roe
Mrs Leach



Earhart Class

Mrs Hook
Mrs Moore



Emails



- *Governors duty*
- No emails after 5pm Monday-Friday or during weekends and holidays.
- Staff will respond to emails within 48hours
- Urgent enquiries



Transition from EYFS



- Practical English and maths lessons
- Two 'Plan, Learn and Review' sessions per day
- Shared reading and DEAR sessions each day
- Continued phonic sessions
- Circle times
- There will be a gradual build up to a full class timetable

Useful information



- Break and snack
- Children can bring their own healthy snack for playtime as an alternative
- Book bags



A Typical Day in Term 1 for the Year 1 class 2024

8:40- 9:00	Morning Activity
9:00- 9:30	Phonics
9:30-10:10	Maths
10:15-10:30	Break & snack
10:30-11:15	Plan, Learn, Review
11.15-11.30	Handwriting
11:45-12:45	Lunch
12:45-13:20	English
13:20-14:15	Topic time
14:15-15:00	Plan, Learn, Review
15:00	D.E.A.R (Drop everything and read)
15:15	Home

Termly Overview

A snap shot of
the year to come!

Our curriculum intent
Children learn through
discovery & investigation.
Big question.

Term 1

Family and Feelings



Term 2



Fireworks and Festivals

Term 3

Once upon a time...



Term 4

Once upon a time...

Term 5

The Sky's the Limit!



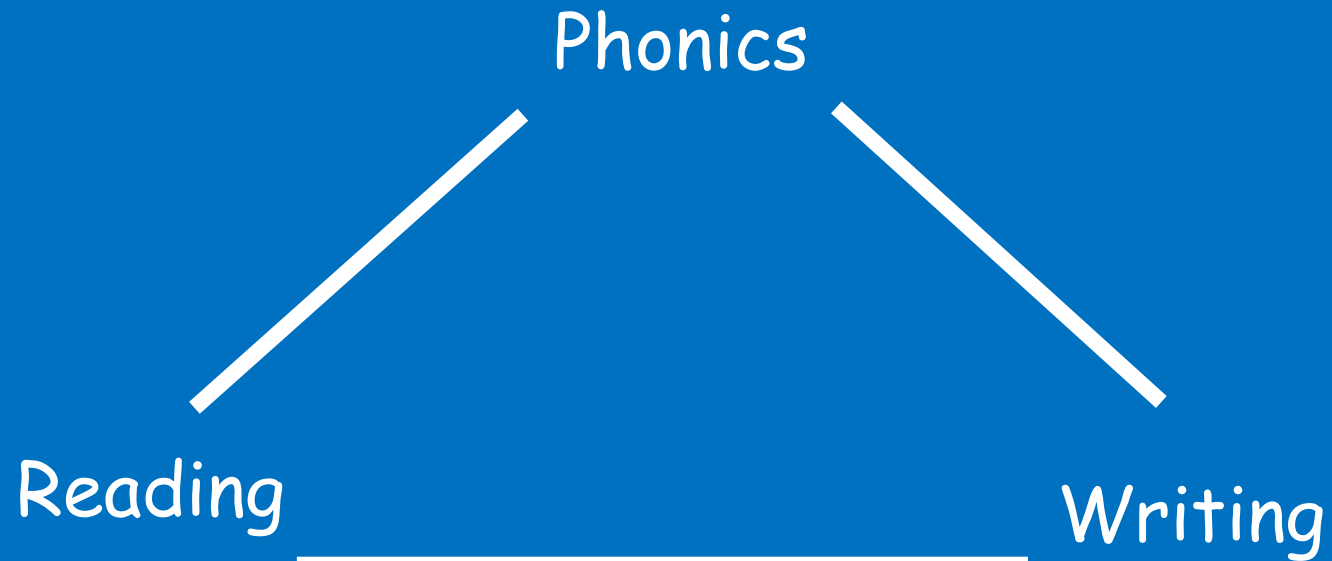
Term 6



The Sky's the Limit!

Phonics, Reading and Writing

Visit the school website for information and resources
<https://www.discovery.kent.sch.uk/curriculum/phonics/>



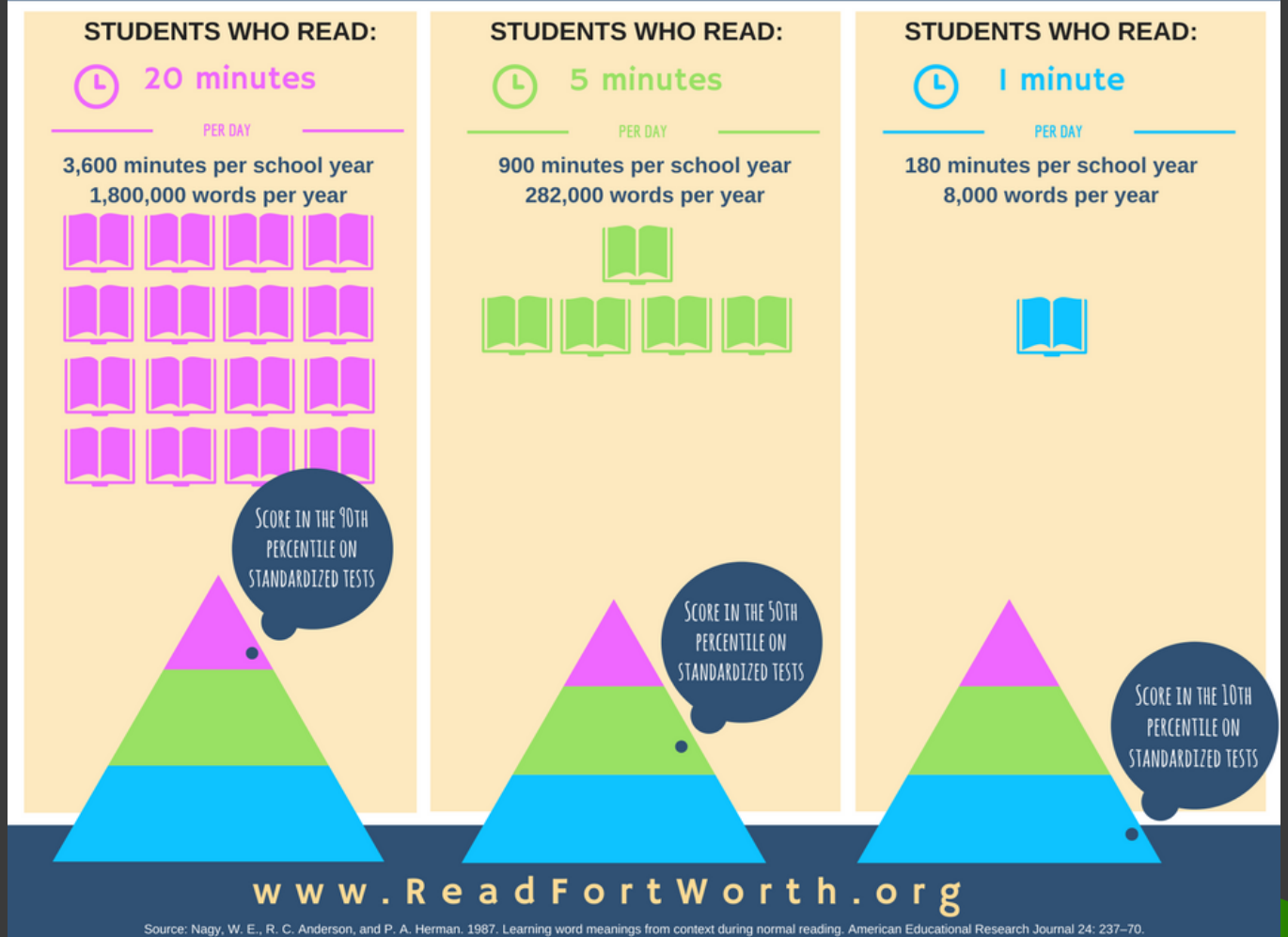
The Phonics Screening

- National assessment
- Real and pseudo or 'alien' words
- Children to read the words by sounding out or sight reading
- Scores are sent to the Local Authority and a bench mark is set
- Interventions in preparation
- Please do not take your children out of school during this time

Impact of Reading

Why read 20 minutes at home?

This chart shows the impact reading at home, for just 20 minutes a night can have on a child's learning. It is staggering the difference 20 minutes per day can make.



www.ReadFortWorth.org

Read, Read, Read!

- Book change - Monday and Thursday
- FFT reading
- Please record in reading records



Common Exception Words



the
a
do
to
today
of
said
says
are
were
was

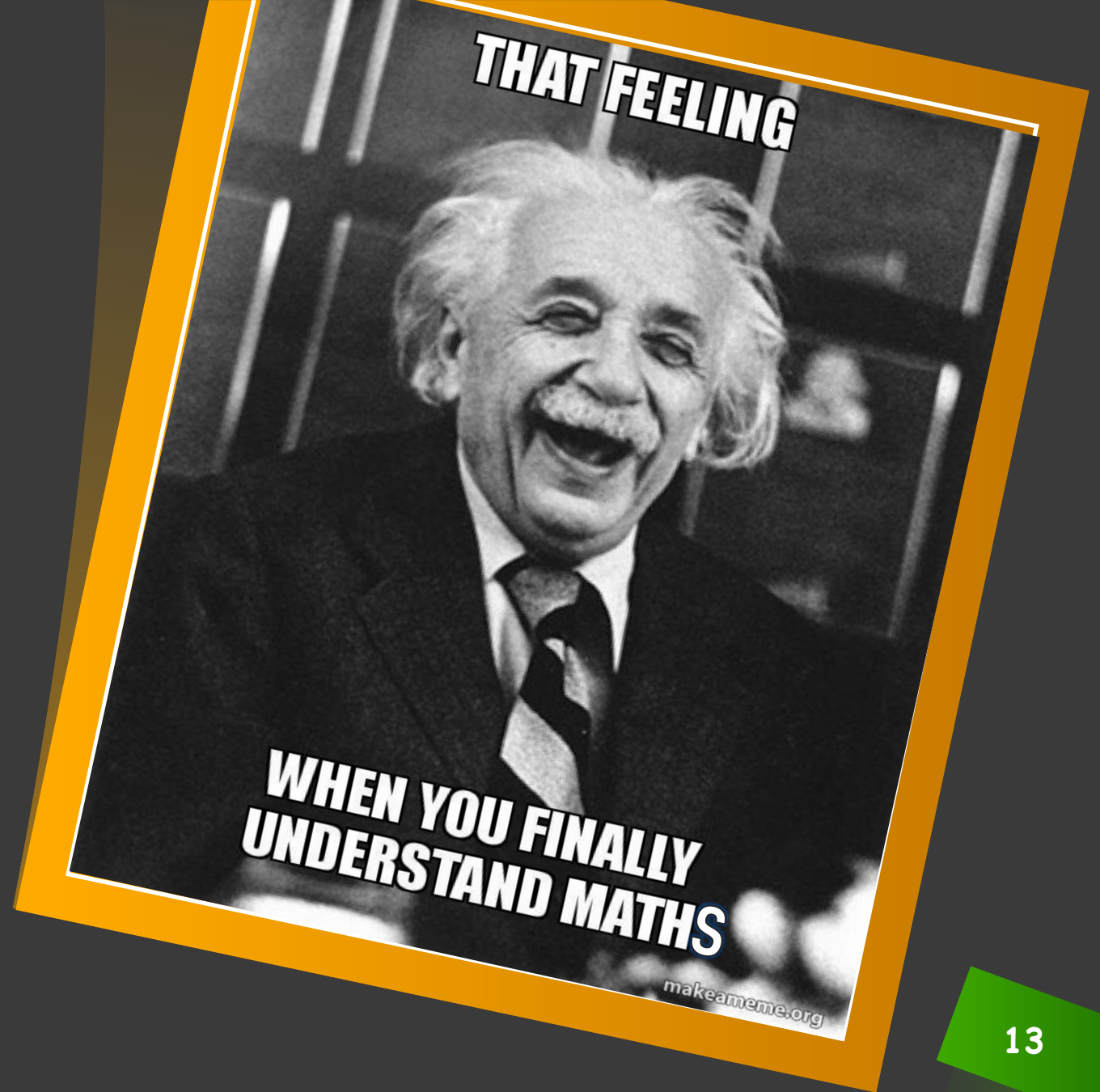
is
his
has
I
you
your
they
be
he
me
she
we

no
go
so
by
my
here
there
where
love
come
some

one
once
ask
friend
school
put
push
pull
full
house
our

Maths - Key Objectives

- Gain a strong understanding of number
- Recognising a number is not understanding number
- Practical investigations



Building Independence

- Completing tasks by themselves
- Encourage to 'help themselves' during lessons
- Messages from home





School Values and Rewards

Respect, honesty, friendship, kindness and perseverance.

- Rewards - school values, golden time, house points, stickers and star of the week.
- Achievements outside of school



Show and Tell

- Once a week
- It will be led by the children
- Timetables

Homework

17

A must!

- PLEASE READ EVERY NIGHT

Optional - yet beneficial

- Year One Common Exception words.
- Number recognition
- Writing/mark making



**WE HAVE
HOMEWORK?!**

Housekeeping

- Medication - school office
- Going home arrangement
- Reporting absences - office and class teacher
- Labelling uniform

Useful websites



Discovery website,
Year One page

Phonics Play

<http://www.phonicsplay.co.uk>

Top marks

<http://www.topmarks.co.uk>

ICT games

<http://ictgames.com/index.html>

BBC bitesize

<http://www.bbc.co.uk/bitesize/ks1/litera>

National curriculum

<https://www.gov.uk/government/collections/national-curriculum>





Thank You!

We hope that your children have a wonderful time in Year 1.