

Welcome to
Year 4!



The Current Year Four Team

Thunberg

- Mr Wood (Year 4 Leader).
- T.A. Miss Skinner
- T.A. Miss Lee



The Current Year Four Team

Berners-Lee

- Mrs Ingles
- T.A. - Miss Micoud
- T.A. - Ms Ward-Lewis



The Current Year Four Team

Jemison

- Miss Stock
- T.A. - Mrs Stiff
- T.A. - Miss Ball



Term 1 and 2

What did the Romans bring to Britain?

Enrichment opportunity: cooking outdoors, Roman Britain trip TBC

Term 3 and 4

What makes our world wonderful?

Enrichment opportunity: outdoor learning activity

Term 5 and 6

What makes the Anglo-Saxons special?

Enrichment opportunity: external workshop TBC

Thunberg Timetable Term 1 and 2

	8:40 9:00	9:00 - 10:30	10:30- 10:45	10:45 - 12:15		12:30 - 1:30	1:30- 1:40	1:40 - 3:15			
				10:45-11:15	11:15-12:30						
Monday		English <small>Assembly - 10:15 - 10:30</small>		Guided reading	Maths	Lun ch	DE AR	1:30 - 2:00 - TT practise	2:00 - 3:15 History/Geography		
Tuesday		English <small>Music assembly - 10:10 - 10:30 Homework between 10:10</small>		Guided reading	Maths	Lun ch	DE AR	1:40 - 2:15 Art	2:15 - 3:15 - P.E (outdoor)		
Wednesday	Retrieval Practice	9 - 9:30 Ukulele English		Break	Guided Reading	Maths	Lun ch	DE AR	1:40 - 2:15 Art	2:15 - 3:15 - P.E (indoor)	
Thursday		English <small>Assembly - 10:10 - 10:30</small>			Guided reading	Maths	Lun ch		1:40 - 2:00 Spelling	2:00 - 3:15 Science	
Friday		8:40 - 9:20 Reading - English	<small>Celebration = Assembly 10:30 - 10:30</small>		English	Maths and Library	Lun ch		PPA - French & RE / PHSE		

PE and Swimming

PE days for Thunberg Class are Monday and Wednesday.

PE days for Jemison Class are on a Tuesday (swimming) and Wednesday.

Berners-Lee Class have PE on a Wednesday and Thursday.

Swimming will take place on a Tuesday and Jemison are the first class to attend. Berners-Lee Class will be swimming in Terms 3 and 4. Thunberg Class will be swimming Terms 5 and 6.

You will receive a letter closer to the event, however so that you can plan ahead here is the general information on the letter:

- It is during school hours and will exclude half term.
- Children can come to school with their swimming costumes on under their PE kit. If they choose to change at the pool, then they must remember that they will only have a short amount of time to do so, therefore you may wish to practice this at home! This is up to you and the children to decide which you prefer.
- Larkfield's swimming lesson policy states that swimming costumes must be one piece and not bikini or tankini and shorts should not be below the knee. Children can wear swim t-shirts if they want to.
- Long hair must be tied back.
- If your child wishes to wear a swimming hat then they will need to put this on independently, prior to the lesson.
- If your child is able to remove their earrings, then this is preferable.
- Children are encouraged to bring their own goggles, even if they are non-swimmers. This often helps with confidence in the pool when learning to swim.

PE and Swimming

For PE, we ask that children come in the correct school uniform.

This includes:

Navy shadow stripe short

Navy Hoodie with The Discovery School logo

PE shirt in the colour of the child's allocated house

All children need trainers for inside and outside sports.

During winter months children should have a winter sports kit of navy blue sweatshirt or navy blue hoodie and navy blue jogging bottoms.

Forest School

A date for your diary:

Wednesday 6th November

The children will have time with our Forest School Lead and their class teacher.

Break and lunchtime



Please ensure that healthy snacks and food are brought into school where possible.

The new Food Policy has been sent to you.

However, nuts and items that may contain nuts should not come into school so that we can keep everyone safe!

Homework Expectations - set on a Friday, due on Wednesday.

- **Reading every night** - to be recorded in the reading record, which we would like to see on a Tuesday and Friday.
- **Reading Plus** - one read and one vocabulary activity per week (minimum).
- **Times tables (Monster Multiplication)** - the children must spend some time learning their tables each week.
- **Weekly spellings pattern.**
- **Additional tasks will be available on Purple Mash linked to a current topic.**
- **Homework will be set on Class Dojo.**

Reading

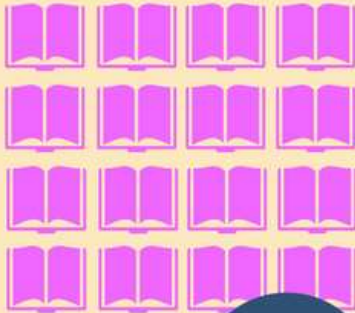
Why read 20 minutes at home?

STUDENTS WHO READ:

 20 minutes

PER DAY

3,600 minutes per school year
1,800,000 words per year



SCORE IN THE 90TH
PERCENTILE ON
STANDARDIZED TESTS

STUDENTS WHO READ:

 5 minutes

PER DAY

900 minutes per school year
282,000 words per year



SCORE IN THE 50TH
PERCENTILE ON
STANDARDIZED TESTS

STUDENTS WHO READ:

 1 minute

PER DAY

180 minutes per school year
8,000 words per year



SCORE IN THE 10TH
PERCENTILE ON
STANDARDIZED TESTS

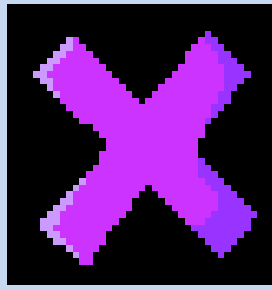
www.ReadFortWorth.org

Reading Trees!

- We are carrying on with our popular Reading tree this year. There will be 36 high quality books will be in each class.
- The list of these books is n the school website and sent home.
- The aim is for children to read 30 books to earn a Gold Certificate.
- If they read 20 books, they can earn a Silver Certificate.
- If they read 10 books, they can earn a Bronze Certificate!
- Children can read these books to you, and you can read them to your child.
- Books can be taken home, but we ask that they are well looked after and returned! Staff from each class will be monitoring which books are going home.
- Children will be encouraged to take responsibility to record when they have read each book, so they know when they have completed the challenge!



Times Tables



You may be aware that the government introduced the Multiplication Check for all children in Year 4.

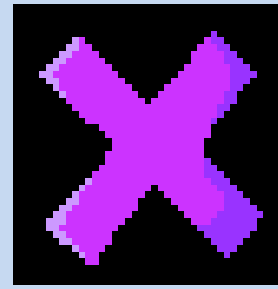
It will take place during June (a similar format to the Y1 phonics screening).

It tests the pupils' recall of their times tables from 2 to 12.

It is computer based - pupils can use iPads, laptops and some have adult support to type if required.

They have 6 seconds to answer each question.

We are doing lots to prepare your children for this so that this is something that they are used to and not a new and daunting experience for them.



Times tables

- Baseline assessment to find out where the pupils are at in September.
- Each week the children will be expected to learn their times tables, focussing on the ones they struggle with.

The children should be practising their times tables in this order:

- *: 2 5 10 3 4 8
- **: 6 7 9 11 12
- ***: All

Expectations for Year 4 pupils.

- **Greater independence** - working walls, class dictionaries.
- **Develop a greater sense of resilience and maturity**
- **Always putting in 100% effort.**
- **High expectations of presentation and behaviour.**
- **Children are encouraged to bring a healthy snack at break time - no chocolate, crisps or nuts.**
- **Polite, kind and courteous behaviour - follow the school values of honesty, friendship, kindness, respect and perseverance.**
- **Always smartly dressed in correct uniform (labelled please). This includes the correct PE kit.**

Our aim - to have all children issued with a pen licence by the end of Year 4.

Tuesday Monday 22nd July 2022
L.I. to Plan a letter. (1)

Introduction Make it clear why you are writing. Start with 'Dear'	Dear Year 2 children I heard that you are joining our wonderful school. I'm writing to you to tell you all
First Day Experience Start with a clear topic sentence and explain what the first day was like.	On your first day, you might have butterflies in your tummy. • Our year teacher will greet you well • Your teacher will show you where you put your stuff
Things to look forward to Start with a clear topic sentence and explain what things the children can look forward to.	• There are lots of things to look forward to YR • You will get to go on a amazing school trip to a farm • Most best of all gash and chips on Friday. Also, you can and you can make new friends.
What they will be able to do inside and outside Start with a clear topic sentence and explain what things the children can look forward to.	• When you play inside, you can draw and you can play with toys such as train tracks, dolls, and doll houses. When you outside you can play on a amazing adventure play climbing playground and you can play on a house outside and play in it.
Conclusion Explain how much we are looking forward to meeting them	All the teachers are so excited to see you and in September I am very sure you will be so excited, soon sent

6/1/2022 day 1 Week 1

1. $9 \times 1 = 9$ ✓
 2. $10 \times 38 = 380$ ✓
 3. 8,000 m /
 4. Annie: 14 hours
 Ron: 15 hours Ron walks for longer! ✓
 $5 \times 2 = 10$ ✓

6/1/2022
 How do we multiply a three digit number by a one digit number? ✓ 😊

Q1 $6 \times 106 = 636$ ✓

106
x 6
636

Q2 $4 \times 209 = 836$ ✓

209
x 4
836

Q3 $317 \times 3 = 951$ ✓

317
x 3
951

Q4 Both are correct ✓

Rewards and Sanctions

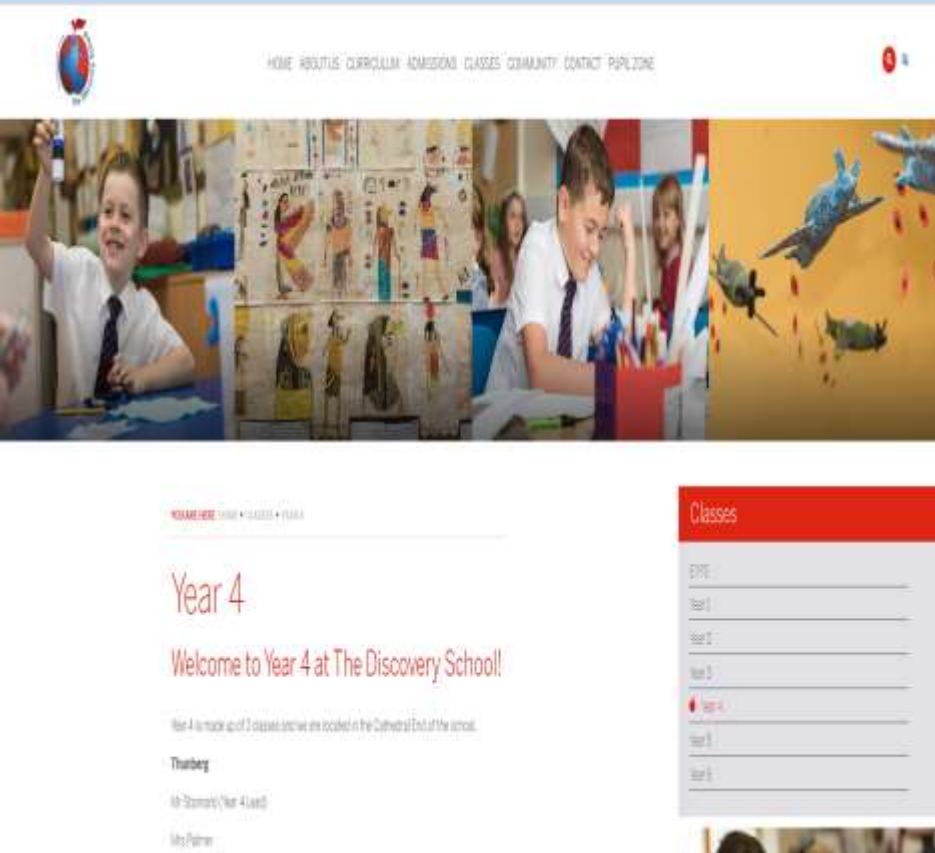
- **Rewards**

- Stickers, house points, postcards of praise, behaviour ladder, star of the week, head teacher awards, deputy head awards, excellence awards, and share good work with other classes and staff.
- Reward time earned.

- **Sanctions**

- warnings, isolated learning within class or within the year group, missed minutes from playtimes.
- Sent to Year Group Leader or members of the SLT as set out in the behaviour policy.
- Parents informed as appropriate.

Learning updates & Year group page



HOME ABOUT US CURRICULUM ADMISSIONS CLASSES COMMUNITY CONTACT PAPERZONE

Year 4

Welcome to Year 4 at The Discovery School!

Year 4 is made up of 2 classes, one in the Cathedral End of the school.

Tracy Berg

Mr Storrans (Year 4 Lead)

Ms Palmer

Classes

- EPPE
- Year 1
- Year 2
- Year 3
- Year 4**
- Year 5
- Year 6



YOU ARE HERE: HOME > CURRICULUM > LEARNING UPDATES

Learning Updates

The children at the school are always taking part in exciting learning. You can see their learning updates by clicking on the relevant year group below.

View School Learning Updates

- EPPE Learning Updates
- Year 1 Learning Updates
- Year 2 Learning Updates
- Year 3 Learning Updates
- Year 4 Learning Updates
- Year 5 Learning Updates
- Year 6 Learning Updates

Curriculum

- Our Curriculum
- Supporting Parents with Remote Learning
- Results for School Improvement Survey and School Self-evaluation (March 2022)
- Our First Day
- Basic, Enrichment and Mental Health and Wellbeing
- Special Needs and SEND and Outcomes
- PE & Sports Strategy
- Music
- Computing & Online Safety
- Forest Technology
- Forest School and Outdoor Learning
- Learning Updates**
- Sports Zone

<https://www.discovery.kent.sch.uk/year-groups/year-4/>

<https://www.discovery.kent.sch.uk/curriculum/learning-updates/year-4-learning-updates/>



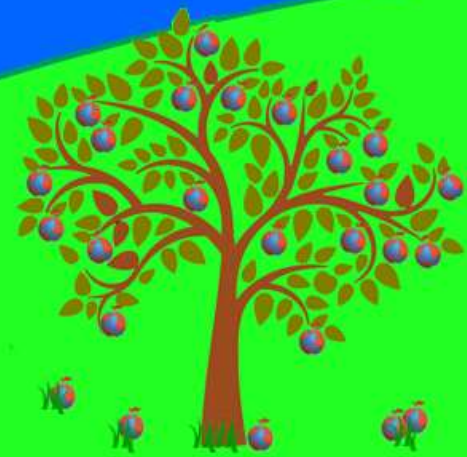
Our music offer

@ The Discovery School

The Discovery School



Learning a Voyage of Discovery



Whole class ensemble teaching - wcet



Recorder

Y3



Ukulele

Y4



Djembe

Y5



y4 Whole class UKULELE lessons

In Year 4, all pupils learn how to play the ukulele as part of their music curriculum.

Ukulele lessons are delivered by a specialist Music Teacher and are part funded by the Music Plus Scheme.

Each class will receive a 30-minute lesson per week throughout the whole academic year..

The lessons develop children's musicianship skills as well as their confidence in playing and performing together.

Children are able to borrow a school ukulele for their lessons but can purchase their own instrument if they choose.

The year's programme will culminate in an end of year performance to parents to celebrate progress.

Medication

- All medication must be taken to the school office by an adult as it needs to be signed in.
- We are unable to administer any medication children bring into the classroom.

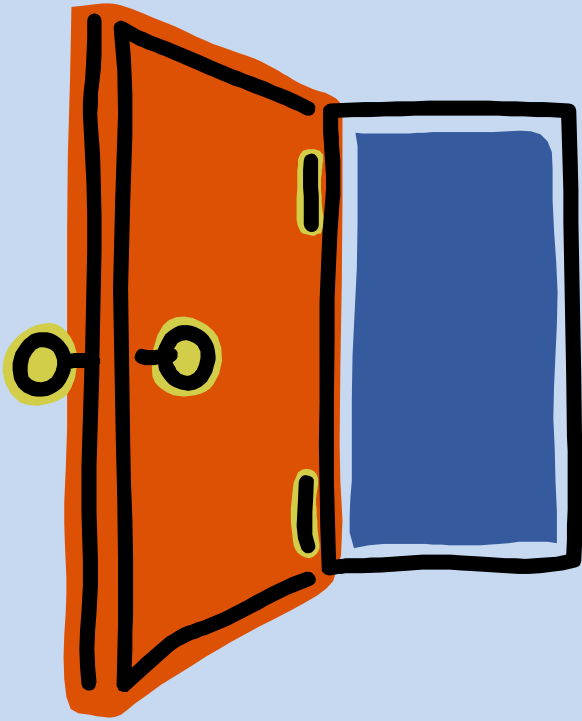
Pick-up

- Some children in Year 4 may need to walk home with older siblings in Year 5 and 6. If this is the case, you will need to email your wishes in advance to your child's class teacher. They will then need to discuss the arrangements with you before agreeing - we cannot agree to this on the day, without having had a discussion with you first.
- This also applies if you want your child to walk home on their own.

Absences

- Please make sure that if you are emailing your child's class teacher to report an absence, you also email the school office (office@discovery.kent.sch.uk)
- Alternatively, you can phone and leave a message if the office is not open yet.

Open Door



- Telephone 01732 847000
- Email office - change of pick up, appointments, absence.
- office@discovery.kent.sch.uk
- You can email your class teacher and staff will respond to e-mails within 48 hours between the hours of 7:30am - 5pm. If the email appears to be of a complex nature, we will usually invite you to come into school and meet with us if appropriate or telephone you.
- Class teacher emails:
fwood@discovery.kent.sch.uk (Year 4 Leader)
ringle@discovery.kent.sch.uk (Berners-Lee)
lstock@discovery.kent.sch.uk (Jemison)

Any questions?

